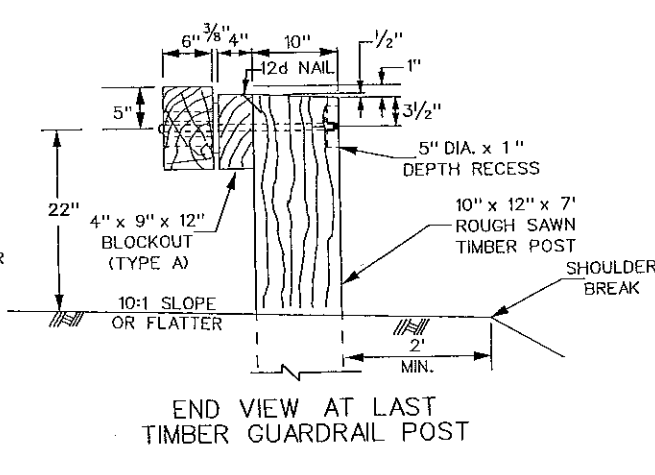
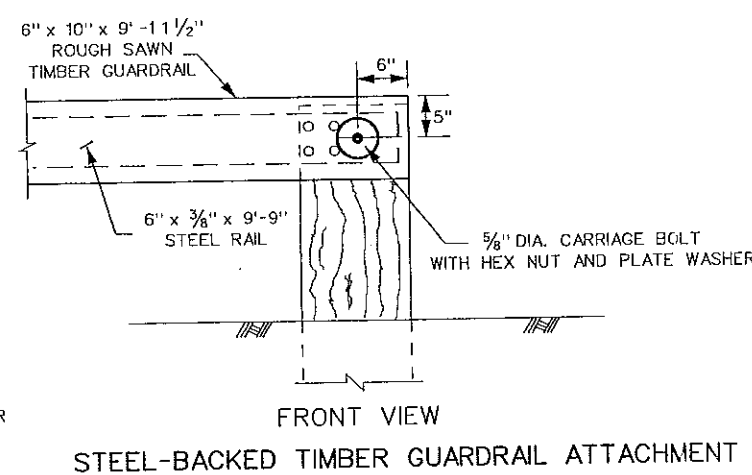
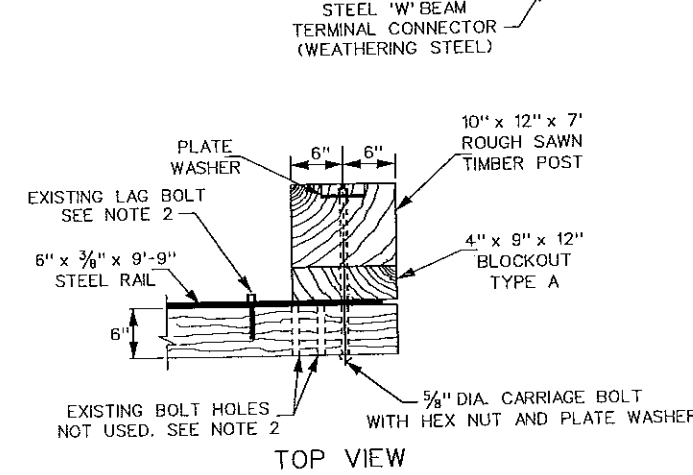
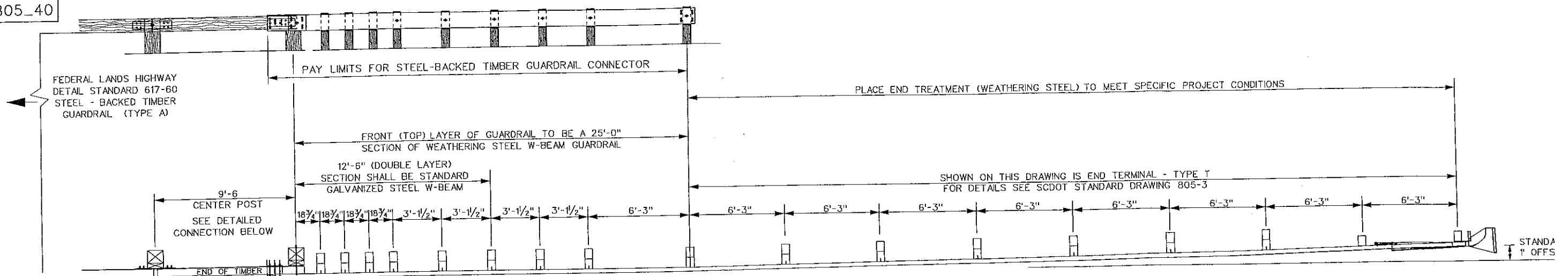
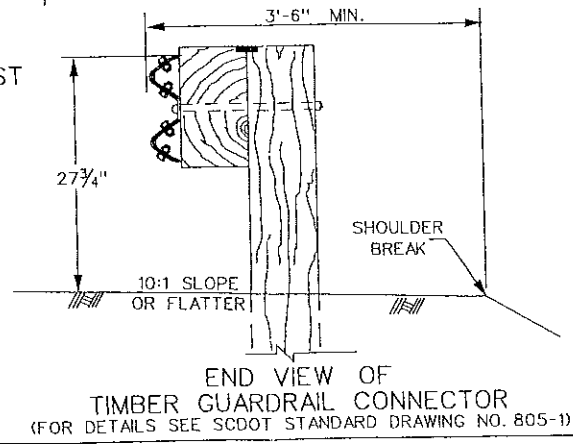
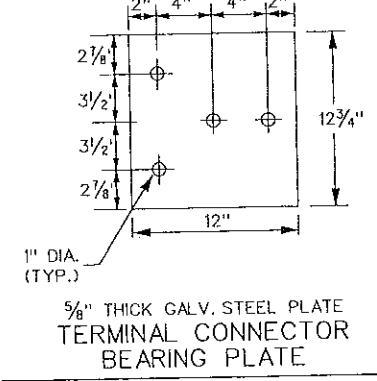
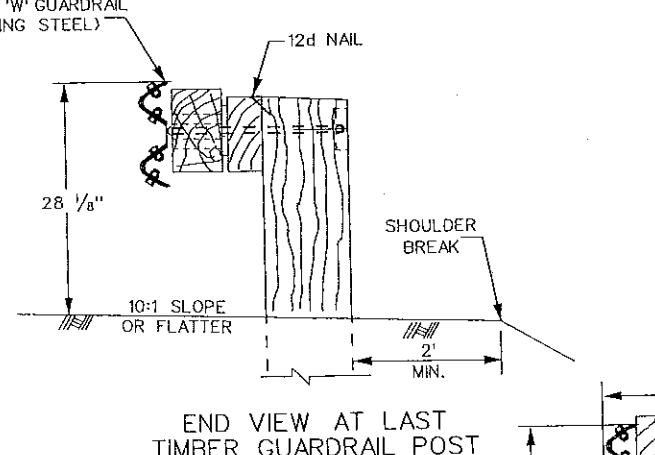
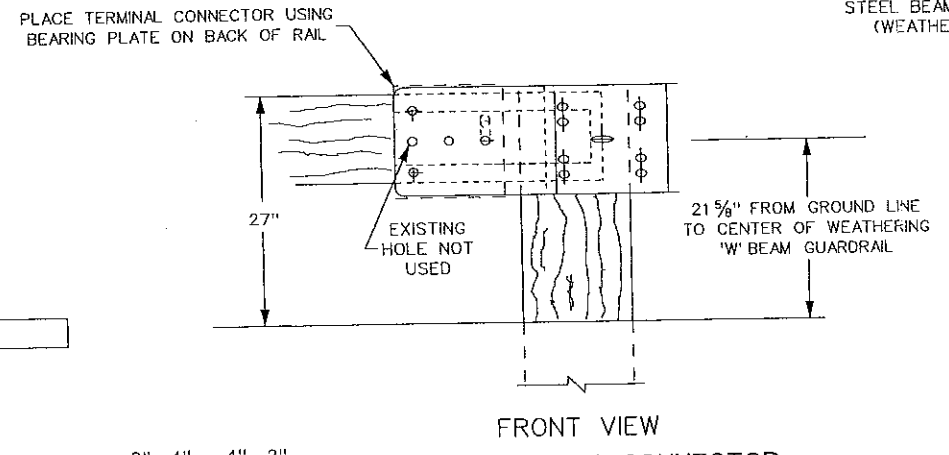
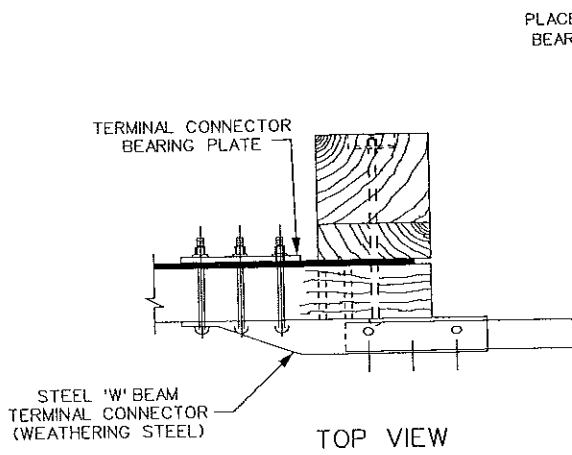


std805_40



- NOTES:
- USE THE FEDERAL LANDS HIGHWAY DRAWINGS INCLUDED IN THIS SET OF PLANS FOR STEEL-BACKED TIMBER GUARDRAIL (TYPE A). TYPE A WITH BLOCKOUT IS USED IN APPLICATIONS NECESSARY TO MEET NCHRP-350.
 - SHIFT STEEL-BACKED TIMBER GUARDRAIL POST SPACING 6" AND FIELD DRILL THE TIMBER RAIL A 1/16" HOLE 5" INCHES FROM TOP OF TIMBER GUARDRAIL AND FROM THE END OF TIMBER RAIL. EITHER REMOVE OR CUT FLUSH EXISTING LAG BLOT IN ORDER TO ATTACH TIMBER GUARDRAIL TO POST THROUGH THE EXISTING POST HOLE WITH 5/8" DIA. CARRIAGE BOLT BY NECESSARY LENGTH AS DIRECTED ON THE FEDERAL LANDS HIGHWAY DRAWINGS.
 - STEEL-BACKED TIMBER GUARDRAIL (WEATHERING STEEL) CONNECTOR SHALL BE USED TO CONNECT STEEL-BACKED TIMBER GUARDRAIL TO STEEL 'W' BEAM GUARDRAIL (WEATHERING STEEL). ONLY WOOD POSTS AND BLOCKOUTS ARE TO BE USED THROUGHOUT THE STEEL-BACKED TIMBER GUARDRAIL (WEATHERING STEEL) CONNECTOR AND THROUGHOUT THE SELECTED END TERMINAL (WEATHERING STEEL).
 - INSTALL TAR PAPER BETWEEN THE LAPS OF TWO SECTIONS OF WEATHERING STEEL 'W' BEAM GUARDRAIL TO COVER THE ENTIRE OVERLAP.
 - SEE SPECIAL PROVISIONS FOR STEEL BEAM GUARDRAIL (WEATHERING STEEL) FOR SPECIFICATIONS.
 - ALL HARDWARE FOR THE STEEL BEAM GUARDRAIL CONNECTOR (WEATHERING STEEL) SHALL COMPLY WITH THE CURRENT REQUIREMENTS GIVEN IN SECTION 8 OF THE SCDOT STANDARD SPECIFICATIONS FOR HIGHWAY CONSTRUCTION AND A GUIDE TO STANDARDIZED HIGHWAY BARRIER HARDWARE - (LATEST EDITIONS).
 - THE TERMINAL CONNECTOR BEARING PLATE SHALL COMPLY WITH AASHTO M GRADE 36 STEEL AND ZINC-COATED ACCORDING TO AASHTO M 111. THE HIGH-STRENGTH STRUCTURAL HEX BOLTS (7/8") USED WITH THE BEARING PLATE SHALL BE IN ACCORDANCE WITH AASHTO M164 TYPE 1. HIGH-STRENGTH STRUCTURAL NUTS SHALL BE IN ACCORDANCE WITH AASHTO M291 CLASS 10S. THE HEX BOLTS & NUTS SHALL BE ZINC-COATED ACCORDING TO AASHTO M232 CLASS C.
 - THE UNIT PRICE BID FOR GUARDRAILS SHALL INCLUDE ALL COST OF FURNISHING AND PLACING THE POSTS AND BLOCKOUTS INCLUDING HARDWARE AND ACCESSORIES.
 - THE PAY ITEMS SHALL BE:
 - STEEL BEAM GUARDRAIL (WEATHERING STEEL) _____ LF
 - END TERMINAL - TYPE T (WEATHERING STEEL) _____ EA
 - END ANCHOR - TYPE B (WEATHERING STEEL) _____ EA
 - STEEL-BACKED TIMBER GUARDRAIL (TYPE A) _____ LF
 - STEEL-BACKED TIMBER GUARDRAIL CONNECTOR _____ EA



REVISIONS		
DATE	REV. BY	DESCRIPTION
06-11-04	C.I.F.S.	NEW DRAWING

SCDOT
South Carolina Department of Transportation
SPECIAL DRAWING
DRAWING NO. 805-40

STEEL-BACKED TIMBER GUARDRAIL CONNECTOR

EFFECTIVE LETTING DATE